

# United States Coast Guard Office of Navigation Systems



**“Enhancing Mariners’ Situational Awareness”**

**eATON and Hurricane Response**

**R. David Lewald | Office of Navigation Systems | U.S. Coast Guard | Washington, DC**



# eATON and Hurricane Response

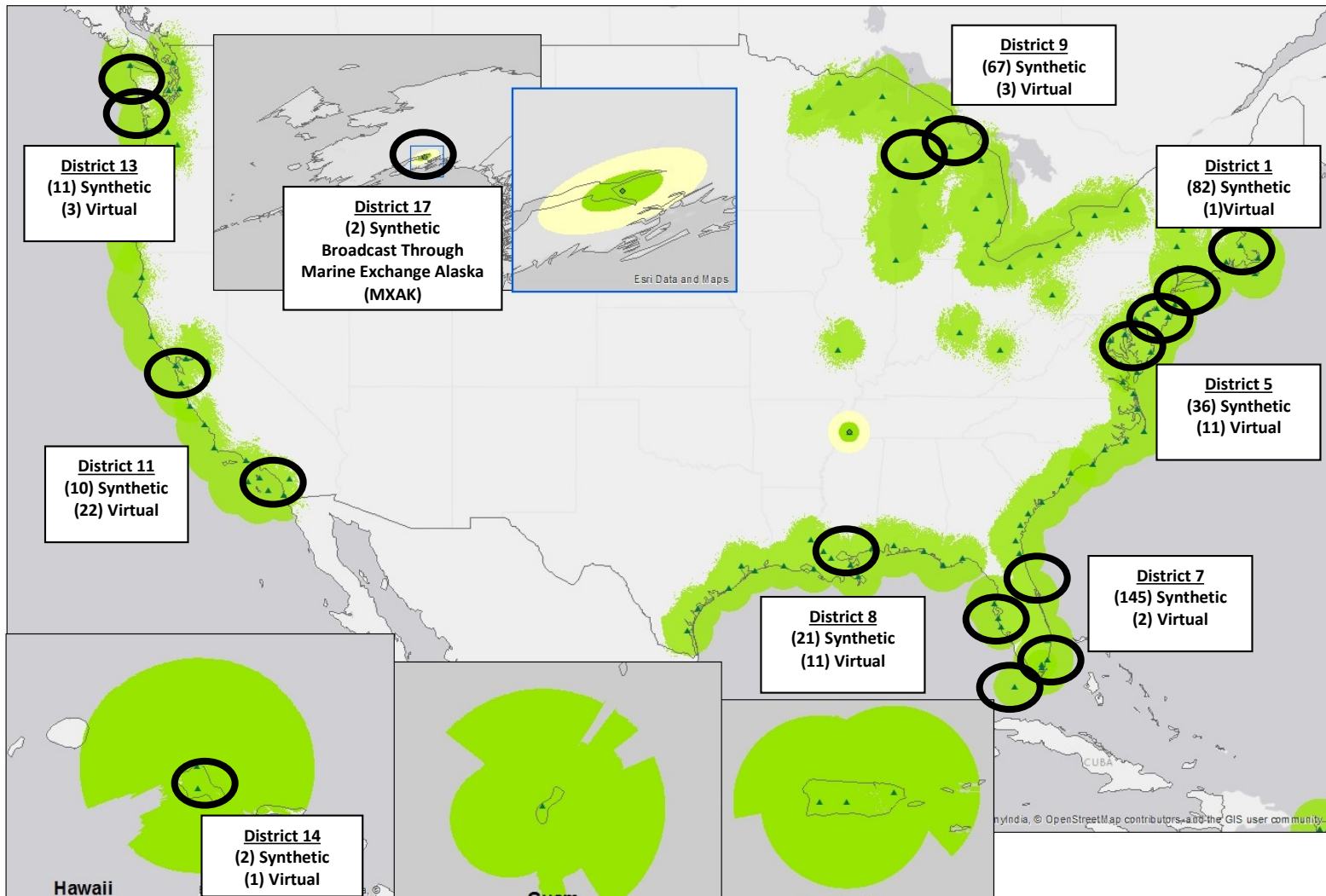




# eATON and Hurricane Response



## Nationwide AIS Towers and Current AIS-ATON





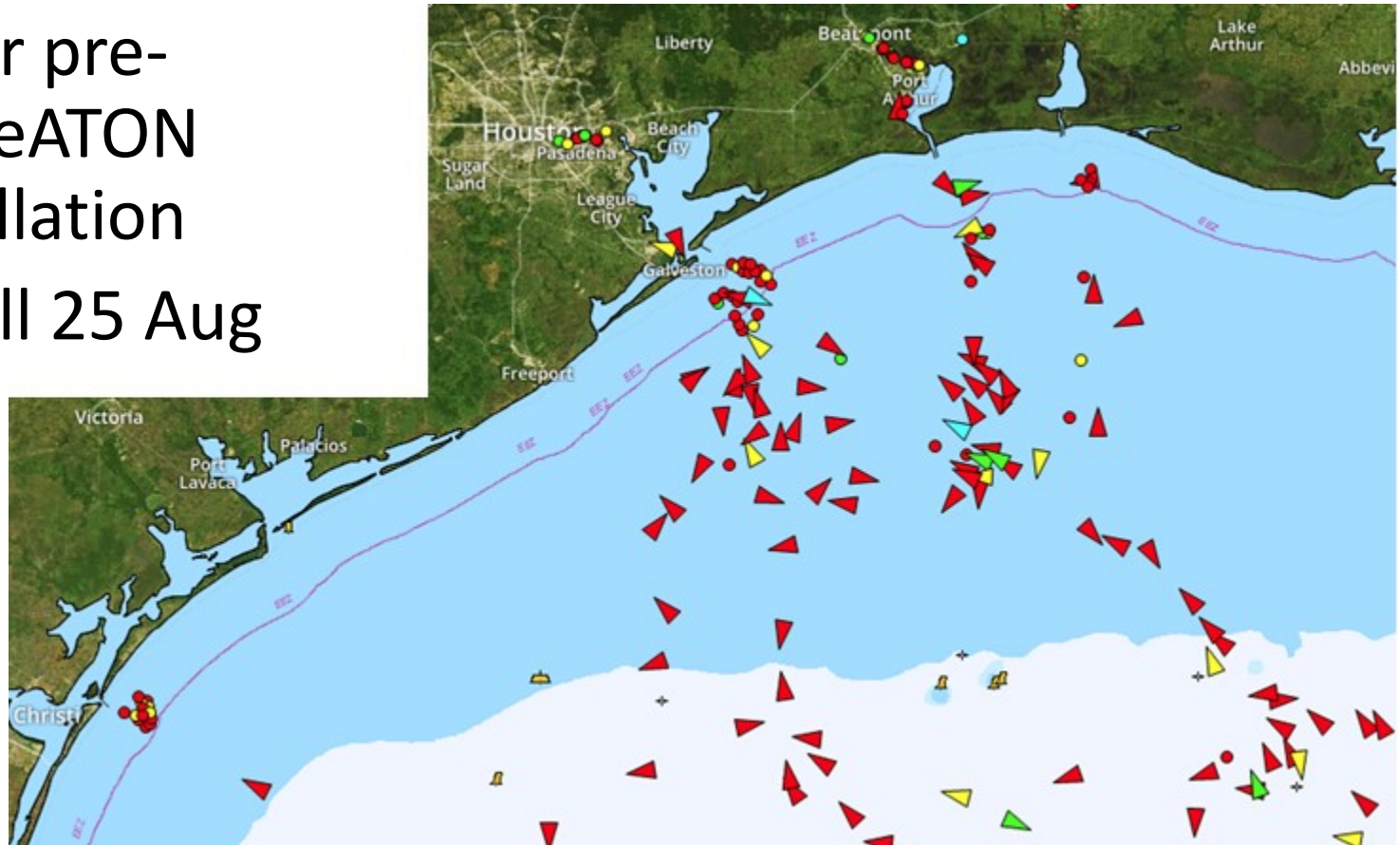


# eATON and Hurricane Response

## Hurricane Harvey

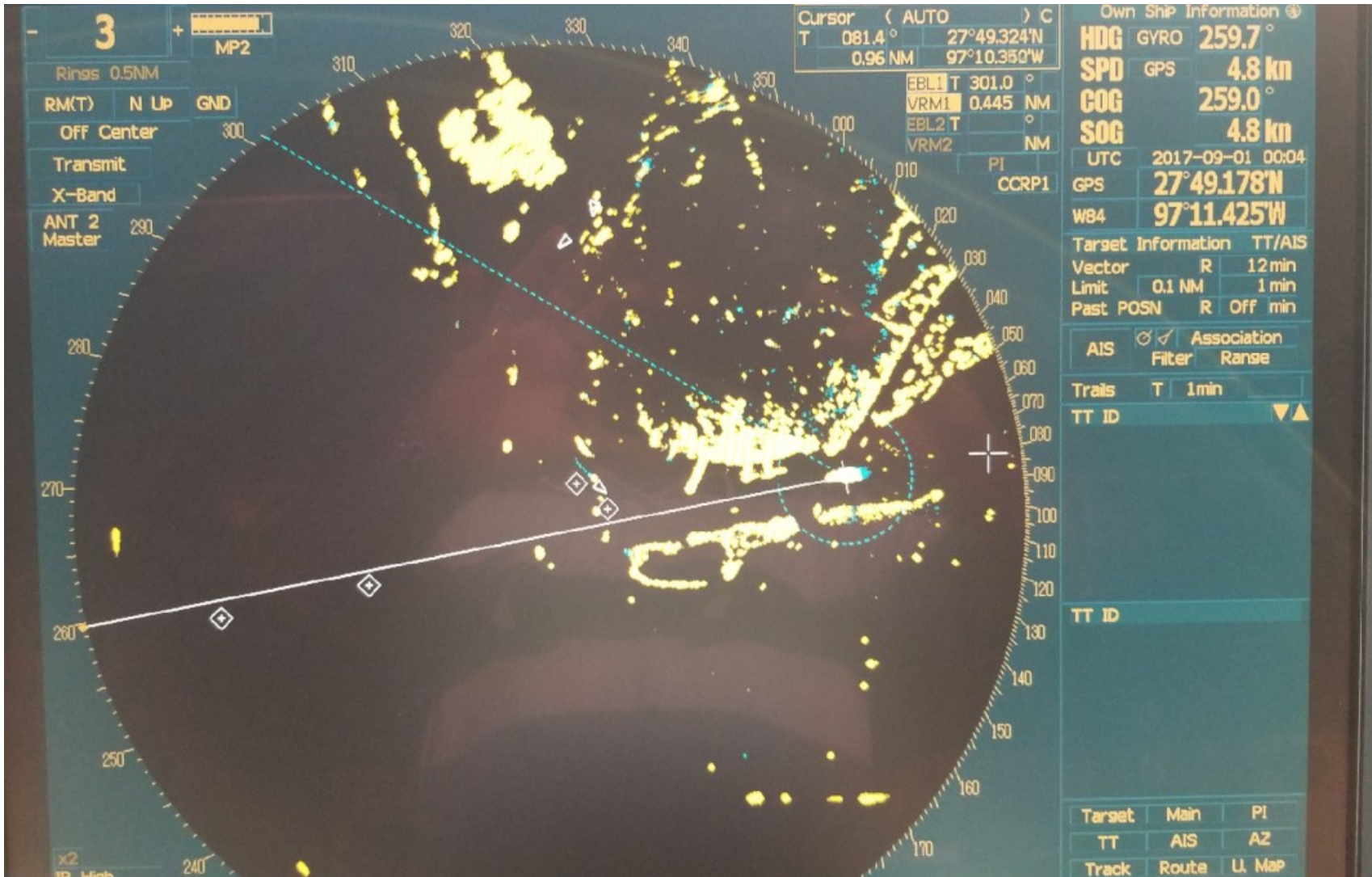


- Corpus Christi and Houston
- Regular pre-storm eATON constellation
- Landfall 25 Aug





# eATON and Hurricane Response







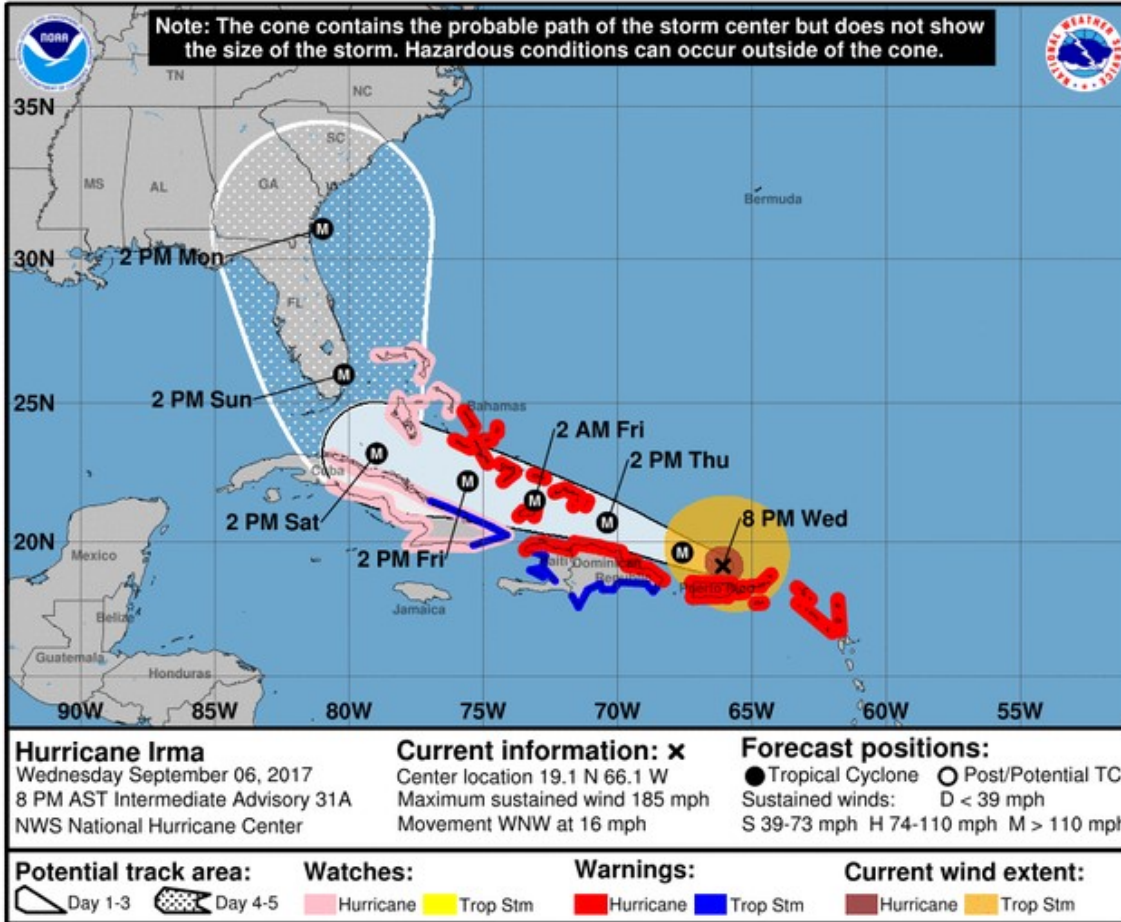
# eATON and Hurricane Response





# eATON and Hurricane Response

## Hurricane Irma



Cone of Uncertainty from  
NC/SC border to Tallahassee FL

- Charleston
- Savannah
- Jacksonville
- Miami
- Key West
- Tampa
- Puerto Rico



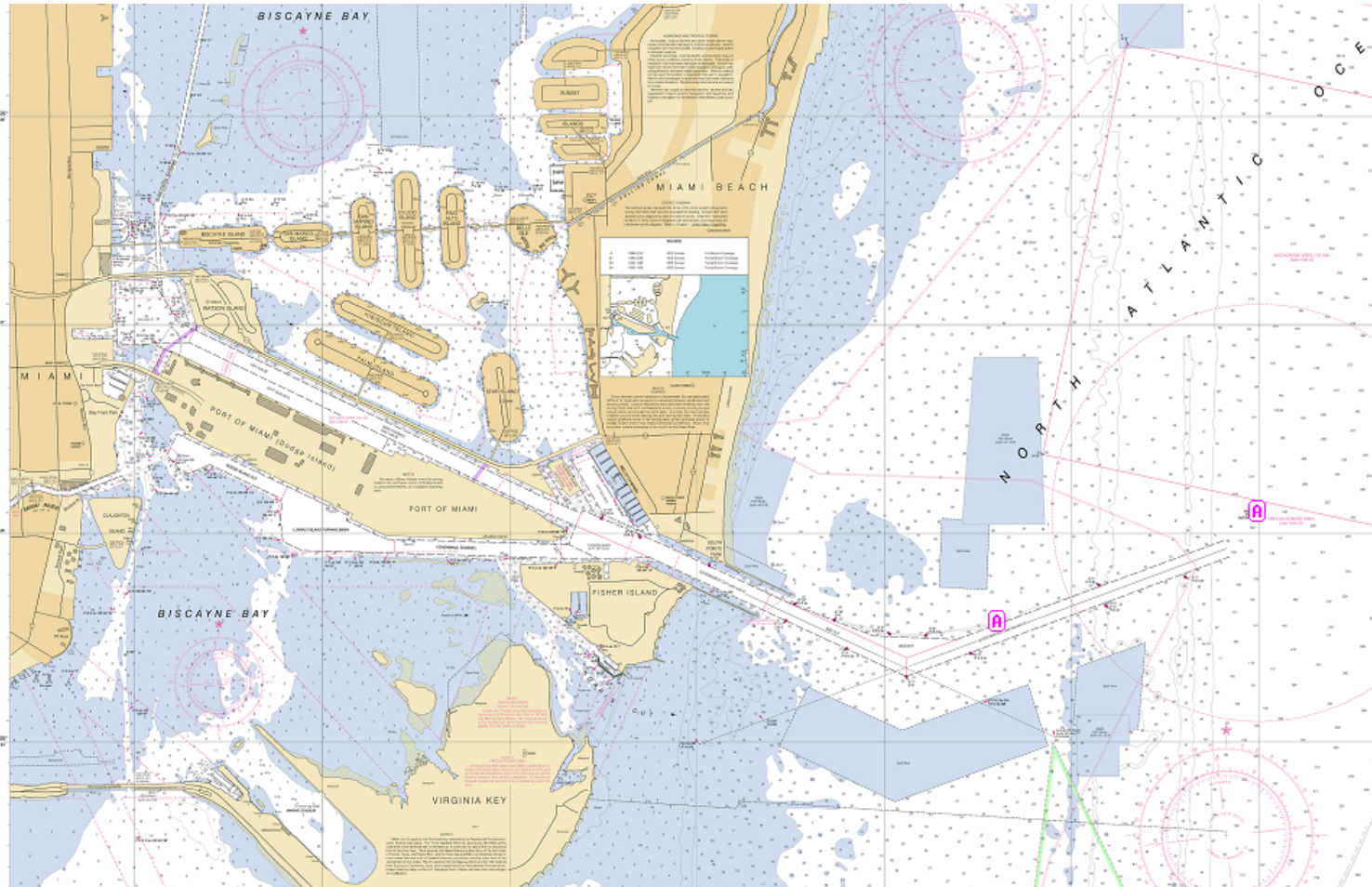


# eATON and Hurricane Response

## Before the storm



Port of Miami

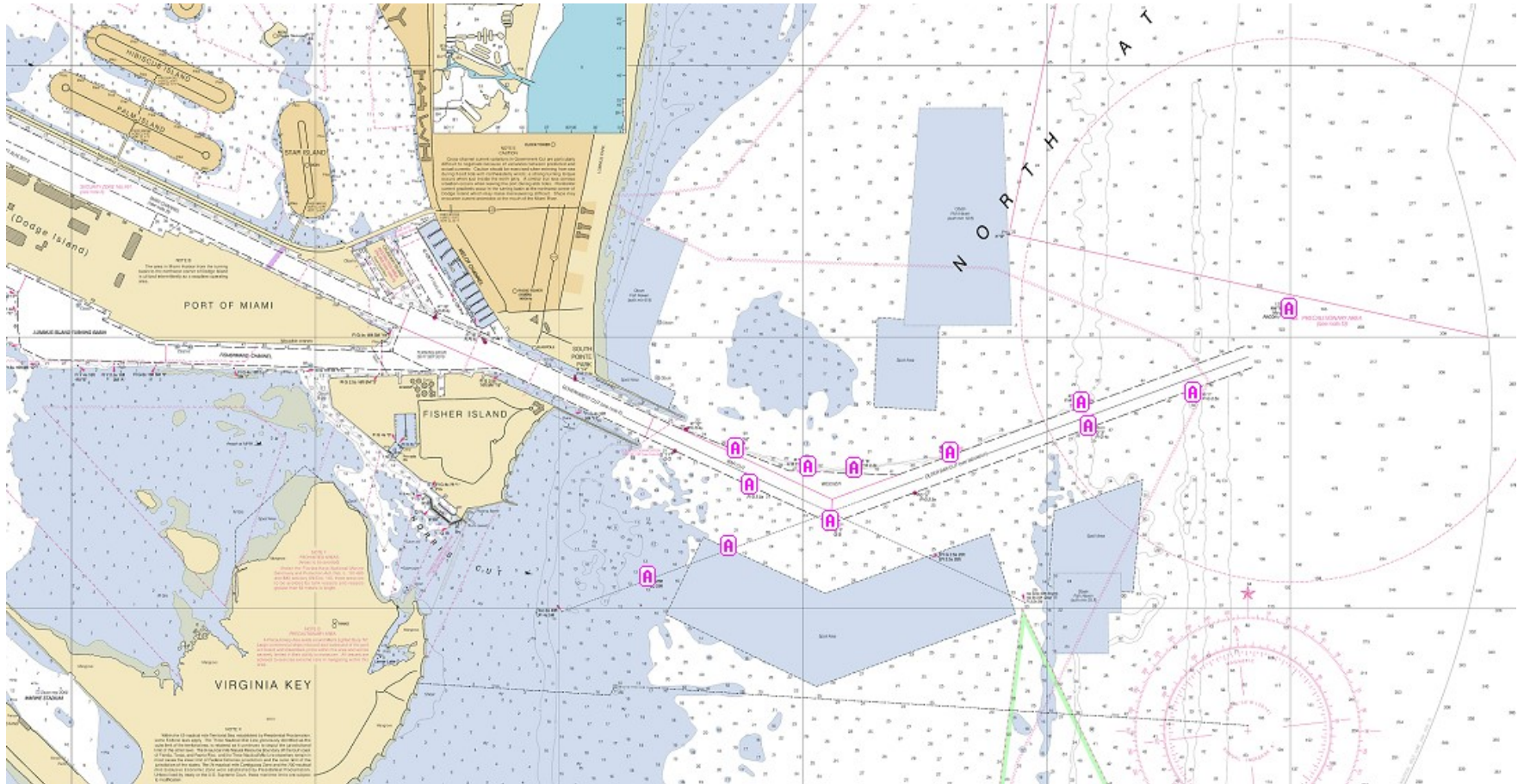






# eATON and Hurricane Response

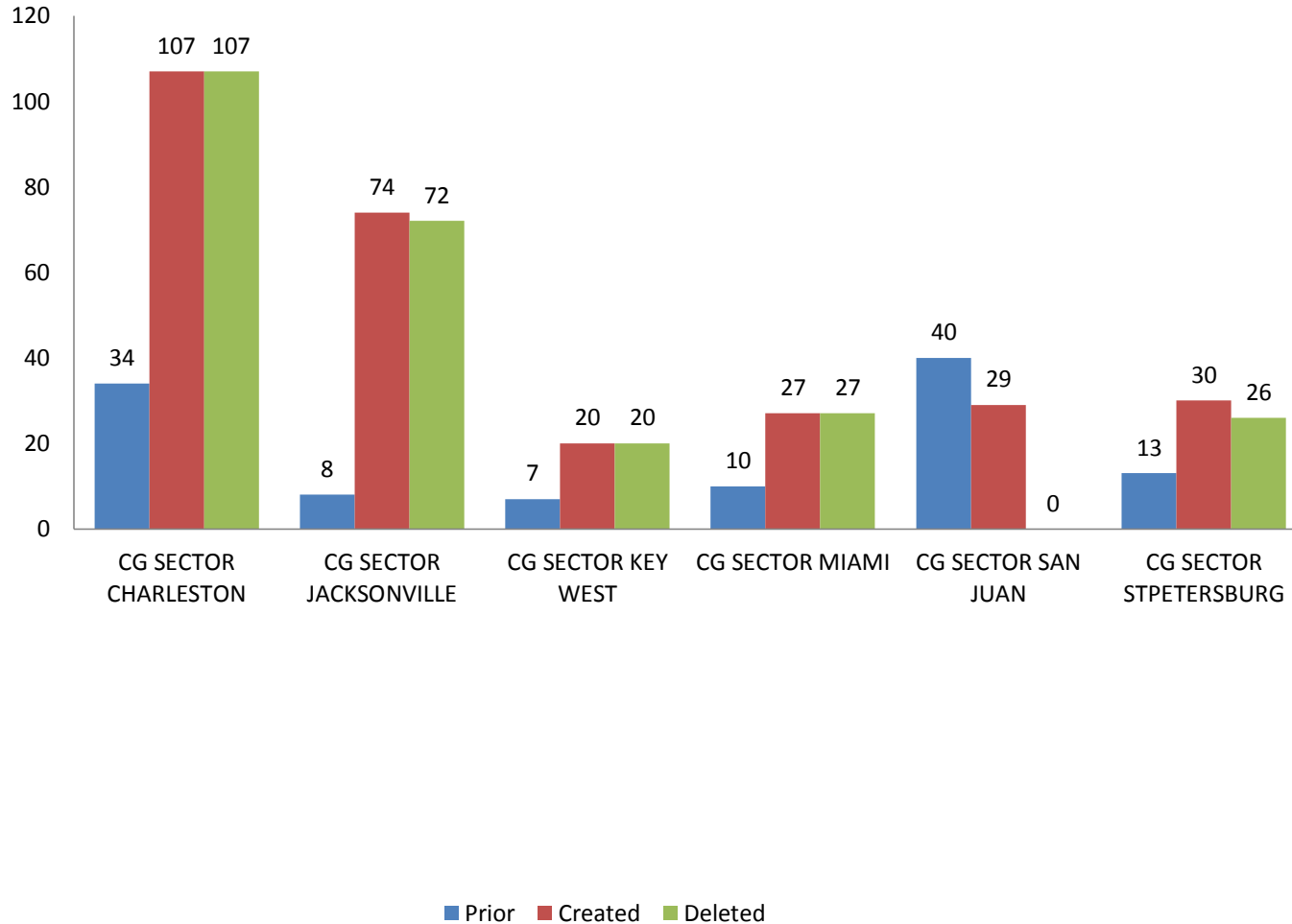
## Storm Constellation





# eATON and Hurricane Response

## Pre storm / Post Storm





# eATON and Hurricane Response

## Lessons Learned

---



- Post Storm ATON response
  - Preloading the towers
  - Portable Kit
- Port Reconstitution
- Establishment and Discontinues SAIS-ATON can be done quickly and simply





# eATON and Hurricane Response



Questions?