

# CLOSE TO

# PortCDM test bed

58°58'19.6"N 5°43'37.1"E



Trond Andersen  
Port of Stavanger





Port of Stavanger

# What is Port of Stavanger?

Port authority -



- monitoring ships movement
- mandatory reporting

Terminal owner -



- rent to privat operators

Terminal operator -



- all services



# The ships are unpredictable

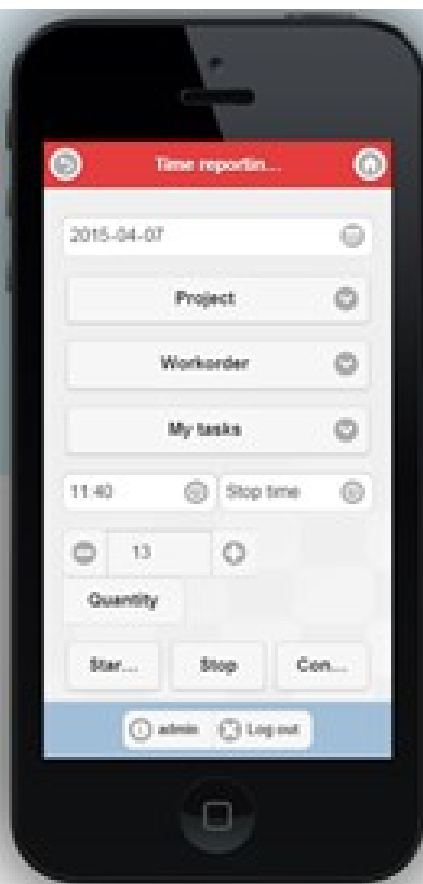
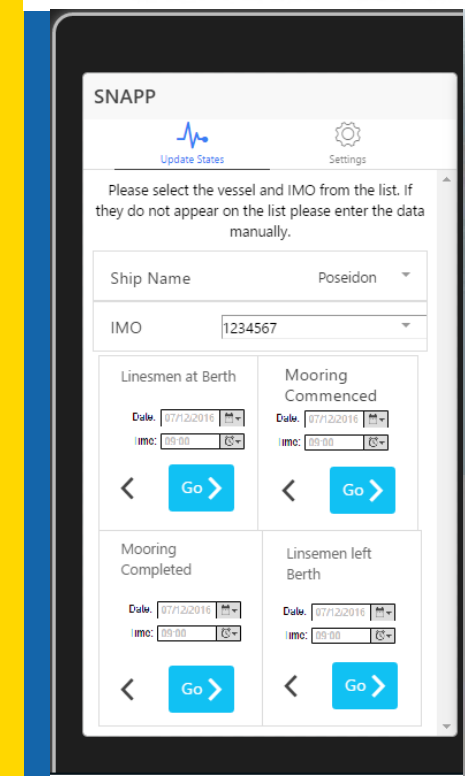
(.....at least for some of us)

The port needs to step up.....

*ok, but tell me your intentions, and in due time....*

Some actors knows, but are unable to redistribute information needed by others to plan and act at ideal time

- From port actor: *Why was I not informed at that time? We could plan our resources in a different and better way.*





# Why PortCDM?



Common language for real/estimated time information exchange across any system, and they are many.....

## More precise port calls

- all actors informed at the same time and at the time the event occurs/changes/updated.

Should make port calls more efficient and result in fast turnaround.

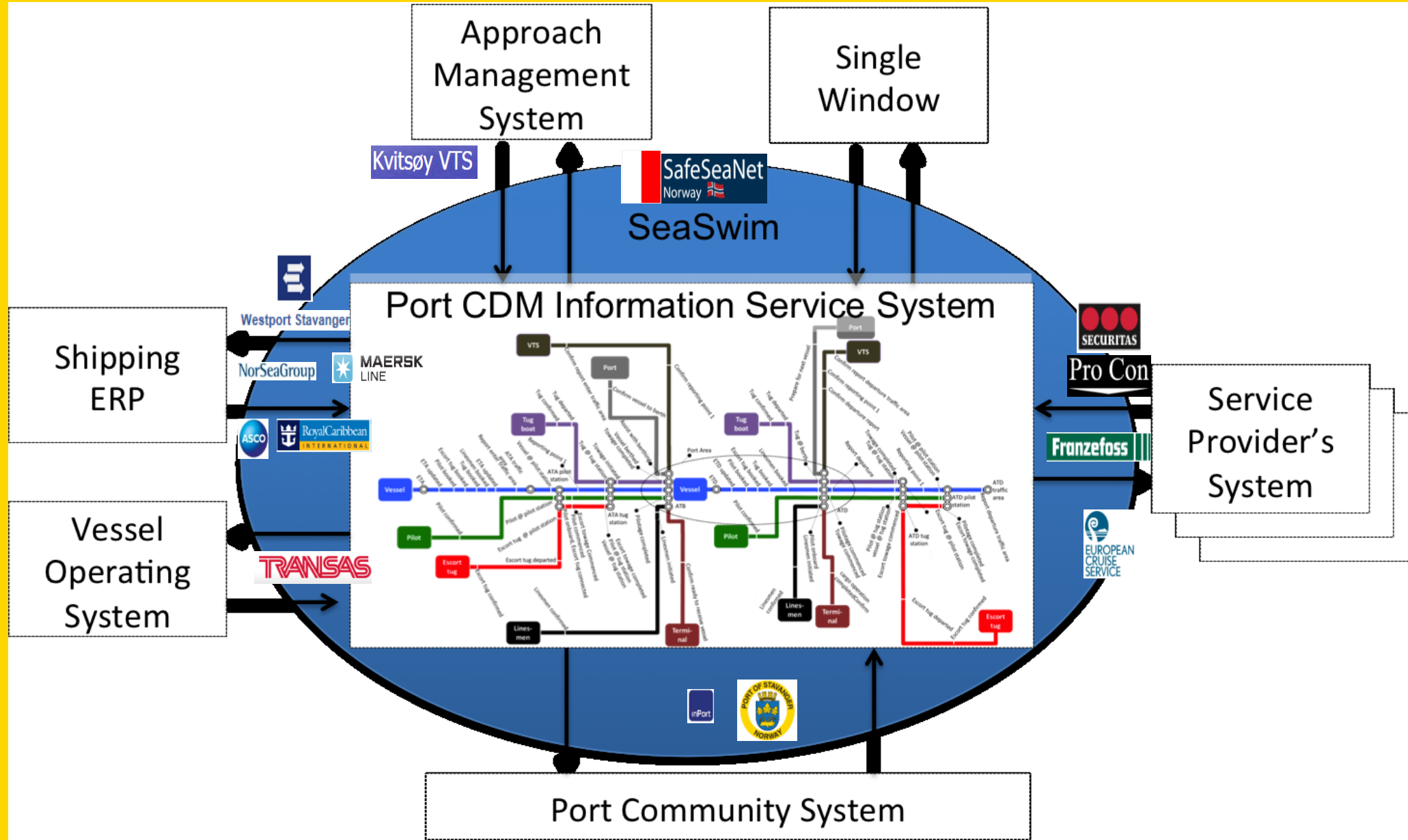
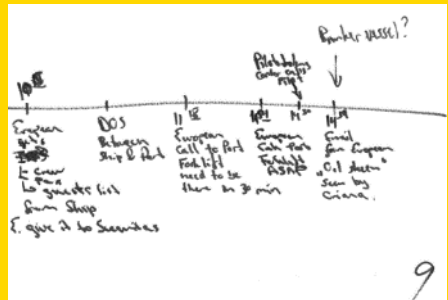
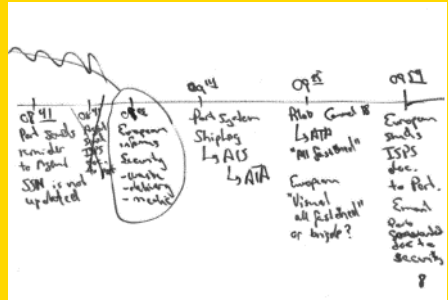
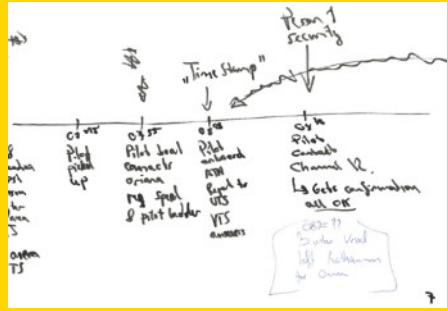
- *Perhaps you have to slow down? When do you want to know that information?*

## Automatic connectors

- reduce and reuse of data sources and information.
- ET-of an event to happen
- AT-of an event that has occurred



# Metromap



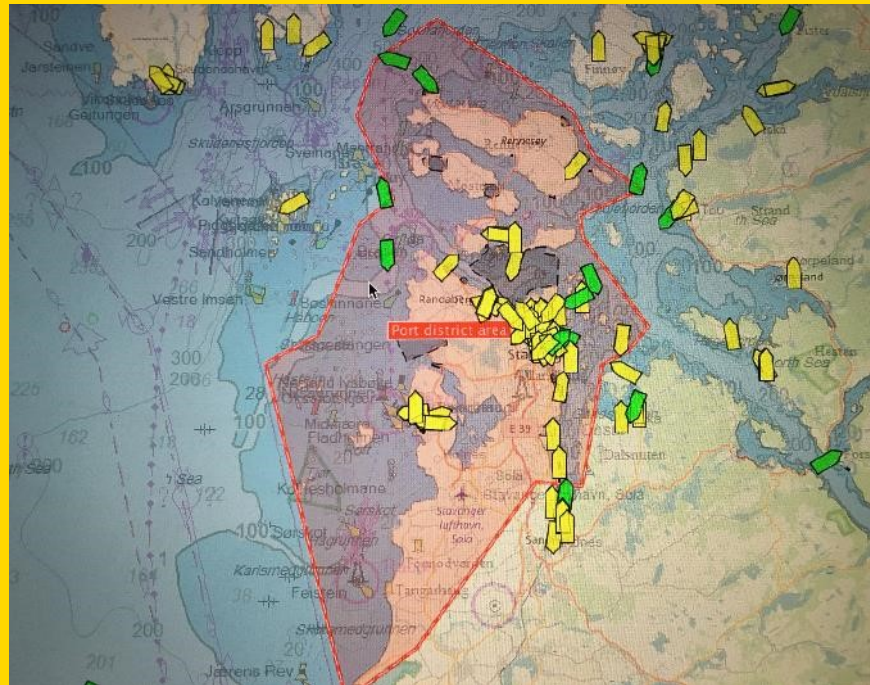
# PortCDM are providing us:

1. real/estimate-time-information
2. situational awareness

- The possibility to
  - just in time arrival
  - fast turnaround
  - optimal resource utilization
  - lower costs
  - maritime transport efficiency

## Automatic AT polygone AIS information:

- Pilotboat - ship
- Tugboat - ship
- Port area
- VTS area
- Quay



A screenshot of a mobile application interface for the Port of Stavanger. The interface is titled 'Evita' and shows a timeline of vessel arrivals and departures. The top status bar indicates 'Telenor DK 3G', '12:36', and '44%' battery. The app header includes a menu icon, a star, a ship icon, the word 'Timeline', a refresh icon, and a plus icon. The main content area shows a vertical timeline with entries for 'PORT VISIT' and 'VESEL AT ANCHORING AREA'. Each entry includes a date and time, a status (e.g., 'A'), and a 'REPORTED BY' field. The 'VESEL AT ANCHORING AREA' entry has a warning icon and a note: 'Vessel has multiple visits to different location at the same time'. At the bottom, there is a flag icon and the 'PORT OF STAVANGER NORWAY' logo.





Port of Stavanger

# Thank you!

Trond Andersen  
Manager Maritim Department  
Port of Stavanger

(+47) 932 23 123  
[trond.andersen@stavanger.havn.no](mailto:trond.andersen@stavanger.havn.no)

