

IALA MODEL COURSE L1.3 ON THE USE OF THE IALA RISK MANAGEMENT TOOLS

Cost: 1 000 € | Language: English

The course includes the following:

- A self-study course on the Introduction to the IALA Risk Management Toolbox will be available from October 21 to 25, 2024, (~12 hours commitment).
- In-person training will be held from November 11 to 15, 2024, at the Hilton Rome Eur La Lama, Rome, Italy.

For further information, contact the IALA World-Wide Academy: academy@iala-aism.org.

INTRODUCTION

The IALA Risk Management Toolbox is a set of tools developed by the IALA (International Association of Marine Aids to Navigation and Lighthouse Authorities) to conduct maritime risk assessments. The toolbox includes five tools: **IWRAP**, **PAWSA MK II**, **SIRA**, **IRMAS** and **Simulation**. The IALA World-Wide Academy (WWA) provides training based on the “Use of the IALA Risk Management Tools” model course. This training is designed for individuals responsible for overseeing waterway management as required by SOLAS Chapter V Regulations 12 and 13. The IALA World-Wide Academy, together with the Italian Coast Guard, will run a training course focusing on the following IALA Risk Management tools and providing an overview of the others:

IWRAP is a standardized, quantitative method to evaluate the probability of collisions, groundings, and allisions in a given waterway. Using AIS data, IWRAP, a Windows-based software program, allows different scenarios to be developed so that changes such as those in traffic volume or composition, route geometry, aids to navigation or introducing other mitigating measures can be modelled.

SIRA is a simplified qualitative method to assess the volume of traffic and degree of risk and identify potential risk mitigation options to reduce the risks to acceptable levels. SIRA is particularly applicable where good quality AIS data, on which IWRAP depends, is unavailable or where access to individuals with the necessary experience level in the risk categories PAWSA uses is limited.

TRAINING DELIVERY

The training will be delivered by global experts in waterway risk management using the IALA risk management tools.

- Training via self-study and distance learning will present fundamentals of the IMO Formal Safety Assessment, ISO 31000 Standard on Risk Management, and the IALA risk management tools.
- During in-person training, course participants will apply the IALA risk management tools to real-world scenarios and discuss the complementary use of the tools and stakeholder management.

SUCCESSFUL RISK ASSESSMENTS

Successful risk assessments have been conducted globally. Some examples are presented below:

- IWRAP has been used to evaluate allisions involving wind farms in the Dover Strait.
- SIRA has been used in Liberia, Somalia, and the South-west Pacific community.
- PAWSA MK II was recently used by the Port of Antwerp and the Port of Beirut.

GOAL

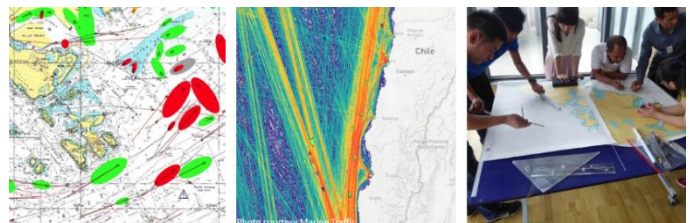
After completing this course, you will have a thorough understanding of IWRAP and SIRA and be able to apply the tools to manage waterway risks.

COURSE TARGET AUDIENCE

The course targets all those involved in the safe and efficient movement of vessels, including VTS and AtoN providers, port authorities, pilotage providers, waterway managers, allied services, marine spatial planners, maritime regulators, training organizations and consultants.

HARDWARE-SOFTWARE AND DATA

- A Microsoft Windows 64-bit laptop with an external mouse is required to install IWRAP. A copy of the IWRAP software will be issued and installed on participants' laptops. Participants must, therefore, have an “unlocked” laptop. Please note that IWRAP does not work on Apple computers.
- Terrestrial AIS data and nautical charts will be provided for modelling in IWRAP, but students can use their own.
- A copy of Microsoft Excel.



VENUE

The in-person training will be held at the Hilton Rome Eur La Lama, Viale Europa 287 Rome, 00144, Italy.

HOTELS

Hotels near the venue of the course:

- Villa Eur Parco dei Pini – Piazzale Marcellino Champagnat, 2 – 00144 Roma (Hotel Roma 3 Stelle Zona Eur | Hotel Villa Eur Roma);
- Hotel American Palace Eur – Via Laurentina, 554 – 00144 Roma (Hotel American Palace Roma | Sito Ufficiale | Hotel Roma Eur);
- Hilton Rome Eur La Lama - Viale Europa, 287 – 00144 Roma (Hotel in Rome EUR - Hilton Rome Eur La Lama - Rome EUR Hotel).

REGISTRATION AND FEES

This course has a capacity of 30 spaces, and online registration is available on the IALA website. The course fee of 1 000 € includes the following:

- Participation in all sessions
- All material presented at the course
- Full license for IWRAP for three months after the course
- Course welcome reception
- All lunches and coffee/tea breaks
- Course dinner on the evening of Day 3

CANCELLATION POLICY

Cancellations must be sent by e-mail to contact@iala-aism.org. A refund in full of the registration fee will only be provided if notification is given at least one month before the event. Otherwise, a cancellation charge of 50% will be applied. Name changes will be accepted. In case of a no-show, 100% of the registration fee will be charged.

PROVISIONAL PROGRAMME

Day 1	
Morning session	Opening ceremony, review of the course titled 'Introduction to the IALA risk management toolbox'. Overview of the IWRAP, PAWSA, SIRA and IRMAS. Coffee break.
Lunch	
Afternoon session	Lecture on the principles of risk management, the development and principles of SIRA, coffee break and welcome reception.
WELCOME RECEPTION	
Day 2	
Morning session	Practical exercise on risk management using SIRA and coffee break.
Lunch	
Afternoon session	Practical exercise on risk management using SIRA and coffee break.
Day 3	
Morning session	Practical exercise on risk management using IWRAP and coffee break.
Lunch	
Afternoon session	Practical exercise on risk management using IWRAP and coffee break.
COURSE DINNER	
Day 4	
Morning session	Lecture on the development and principles of IWRAP and coffee break.
Lunch	
Afternoon session	Lecture on the principles of PAWSA, stakeholder management facilitation of risk management workshops and a coffee break.
Field visit	
Day 5	
Morning session	Lecture on the principles of Simulation, discussion of the complementary use of the IALA risk management toolbox, workshop recommendations, coffee break and closing.
Lunch and depart	